



UWH LEVEL 1 REFEREE COURSE

20^e
CMAS

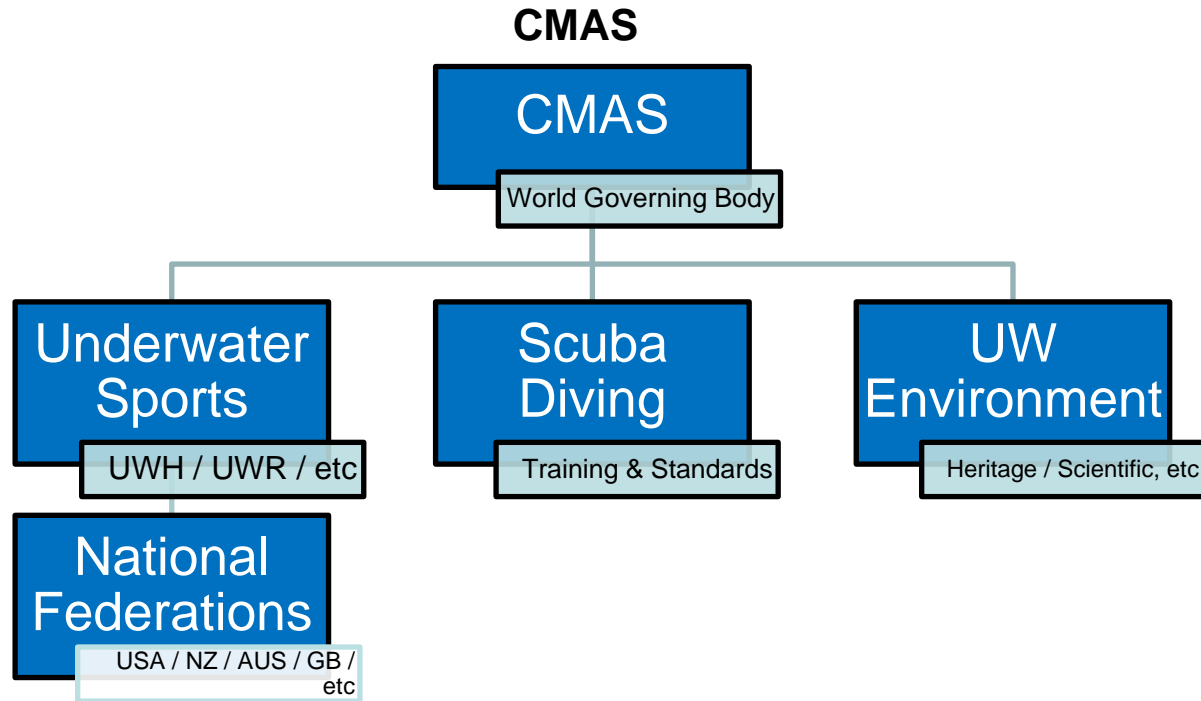
CHAMPIONNAT DU MONDE
de HOCKEY SUBAQUATIQUE
Ville de Québec **Canada**

Section 2 – Intro to Refereeing UWH

©2018 Yori V. Huyr
yorfman@gmail.co

All Rights Reserved

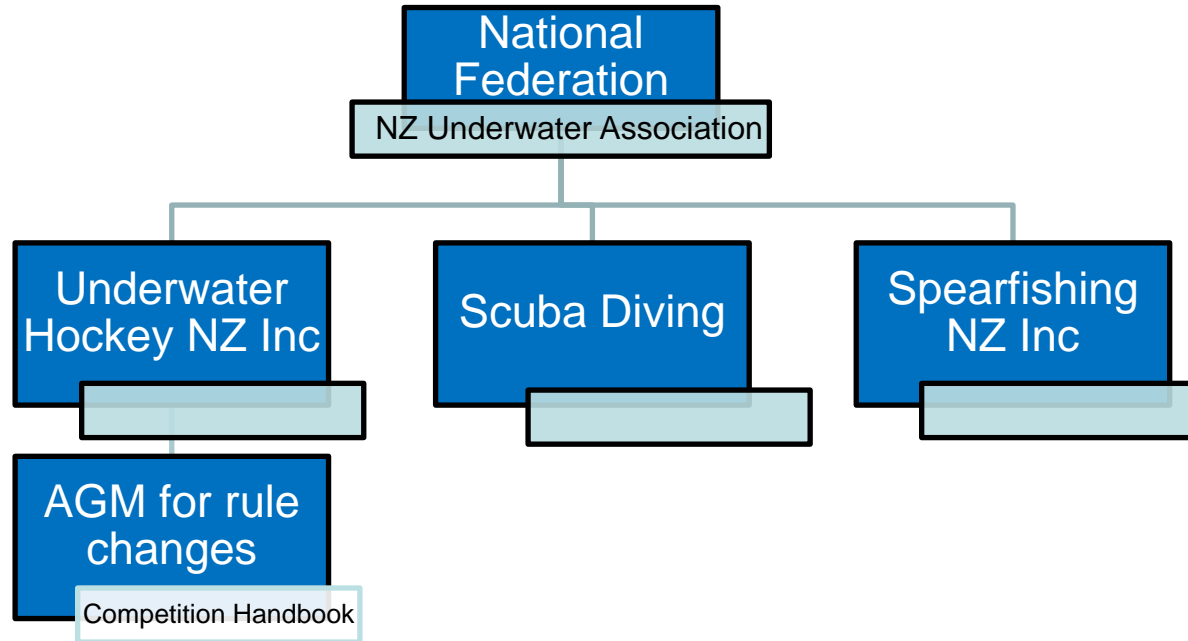
Section 2 - Introduction to Refereeing UWH



- CMAS is the world governing body for Underwater Activities broken down into UW Sports, Scuba Diving, and UW Environment. CMAS coordinates licensing and regulation for each specific area.
- Each Underwater Sport has a specific commission to manage their sport with additional sub-committees as required. At the World Championships (Elite) rule changes are suggested and voted on.
- Each National Federation becomes a member CMAS and obtains licenses for their federation to committees and commissions.

Section 2 - Introduction to Refereeing UWH

National Structures



- NZ Rule changes are discussed at the UWHNZ Inc AGM
- NZ Underwater Association covers all administration policy, and interfaces with Sport NZ, Drugfreesport NZ, CMAS BoD plus Maritime NZ and Worksafe NZ.
- Each National Federation (NZUA) becomes a member CMAS and obtains licenses for their federation. Additionally, each athlete & referee also obtains a license to allow them to participate in CMAS sanctioned events (World Championships, World Cups, etc)

Section 2 - Introduction to Refereeing UWH

	LEVEL 1 REFEREE - CLUB REFEREE	LEVEL 2 REFEREE - NATIONAL REFEREE	LEVEL 3 REFEREE - INTERNATIONAL REFEREE	LEVEL 4 REFEREE - MENTOR REFEREE
MAIN ROLE	<p>The Level 1 Referee is the first level of the career and allows for refereeing at Federation and Internal Club level either in assistant (provisional L1) or autonomous role.</p>	<p>The Level 2 Referee is a National Level Referee with competence to assume all the roles in Category B Events and below.</p>	<p>The Level 3 is an International Referee with competence to assume all the roles in Category A Events and below.</p>	<p>The Level 4 is a competent International referee with sufficient experience to assume tournament management roles.</p>
PRIOR REFEREEING EXPERIENCE (logbook)	<ul style="list-style-type: none"> No previous experience 	<ul style="list-style-type: none"> 50 games at Federation Level Events as Water Referee 20 games at Federation Level Events as Chief Referee Approval of NF Chief Referee or delegate 	<ul style="list-style-type: none"> 200 games at Federation Level Events as Water Referee 10 games at Category B Events (Mixture of water, chief, score desk) Approval of NF Chief Referee 	<ul style="list-style-type: none"> Mentor Referee: Technical Delegate / Director (TD) Tournament Referee (TR) <p>Both the TR and TD are appointed by CMAS</p>

Section 2 - Introduction to Refereeing UWH

	CATEGORY A	CATEGORY B	CATEGORY C	FEDERATION LEVEL EVENTS
CMAS Sanctioned Tournaments	World Championships Zone Championships	World Cups IOC Multi-Sport Events	International Club Events Promo Events	
New Zealand	InterContinental's / Asia & Oceania	SEA Games Trans Tasman's (if sanctioned)		Inter-Region Tournaments Inter-Club Tournaments School Tournaments
Canada	InterContinental's / America's	America's Cup (if sanctioned)		
France	Euro's	European UWH Tour (if sanctioned)		
Australia	InterContinental's / Asia & Oceania	SEA Games Trans Tasman's (if sanctioned)		Aussie Nationals State Championships